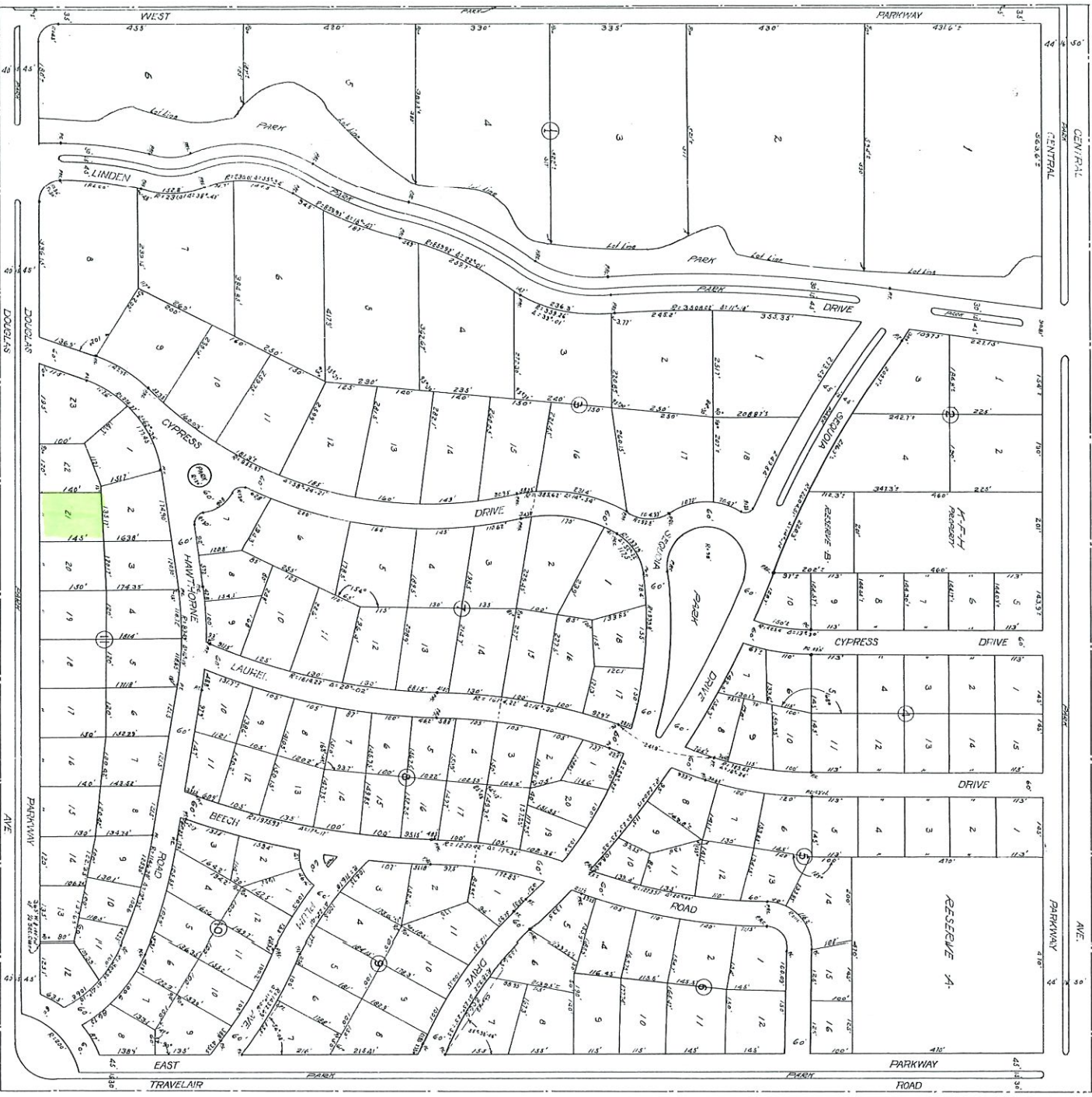


# FOREST HILLS

## SEDGWICK COUNTY KANSAS



CORNER/LOC M 412-127  
 M 249-67  
 M 167-11  
 W.B. 576-579

State of Kansas  
 County of Sedgwick, ss E. Clyde M. Baughman, County Surveyor in and for  
 said County and City, do hereby certify that I have surveyed and platted  
 Forest Hills, Sedgwick County, Kansas, and do herewith accompanying plat  
 in proof of same.  
 Witness my hand and the seal of said County and City at Topeka, Kansas, this  
 15th day of June, 1936.

Clyde M. Baughman, COUNTY SURVEYOR

If you all men by these presents, that we R.E. House  
 Trustees, and Myrcellus W. Murdock, have caused the land described in the  
 survey certificate, to be platted into blocks, lots and avenues, in the  
 name of the City of Wichita, Kansas, and do hereby certify that we  
 mean as assessors, that we will not be held liable for any taxes levied  
 on any of the lots, until such time as the same shall be assessed as such  
 lots, and an assessment of 10 years is hereby granted on the year of all other  
 lots for the construction and maintenance of all public utilities. The Avenues  
 are hereby dedicated to and for the use of the public.

Be it remembered that on this \_\_\_ day of  
 1936, before me a Notary Public in and for said County  
 and State came R.E. House, Trustee and Myrcellus W. Murdock, to me  
 personally known to be the same persons who executed the above  
 plat, and they acknowledged the execution of the same  
 as their voluntary act and deed.  
 My Commission expires \_\_\_\_\_.

GRANT/EASEMENT AT/23 P.252

Supplement 1128 P.123  
 Amend R.S. 1408 P.509  
 Amend. Assessment 1440 P.120

Note - The width of lots facing on courses  
 are given in chord measurements.

This plat of Forest Hills, Sedgwick County, Kansas  
 has been submitted to and considered by the City Planning Commission of  
 the City of Wichita, Kansas, and do hereby certify that the same  
 has been approved by the City of Wichita, Kansas with the recommendation  
 that such plat be approved as proposed.  
 Dated this 11th day of June, 1936.  
 The City Planning Commission of the City of Wichita, Kansas.  
 Attest: \_\_\_\_\_ By: \_\_\_\_\_ Vice President


Approved by the Board of City Commissioners of  
 the City of Wichita, Kansas, this 15th day of June, 1936.  
 \_\_\_\_\_ City Clerk

Approved by the Board of County Commissioners of  
 Sedgwick County, Kansas, this 15th day of June, 1936.  
 \_\_\_\_\_ Sedgwick County Clerk

Entered on Transfer Record this 22nd day of June, 1936.  
 \_\_\_\_\_ Sedgwick County Clerk

State of Kansas, ss This is to certify that this instrument was filed for  
 County of Sedgwick, Kansas, on the 15th day of June, 1936.  
 at \_\_\_\_\_ and is duly recorded.  
 \_\_\_\_\_ Register of Deeds

Re S. of 1408 P.509  
 DEED/AT/23 P.252  
 ASSESSMENT 1440 P.120



This digital plat record accurately reproduces in all details the  
 original plat filed with the Sedgwick County Register of Deeds,  
 Digitized under the supervision of Register of Deeds Bill Meek by  
 Sedgwick County Geographic Information Systems.  
 Bill Meek, Register of Deeds  
 Digitized reproduction of original signature

