

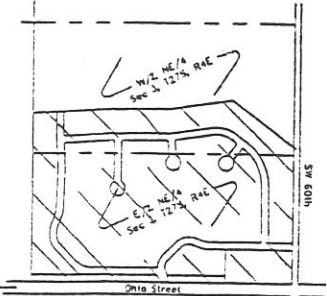
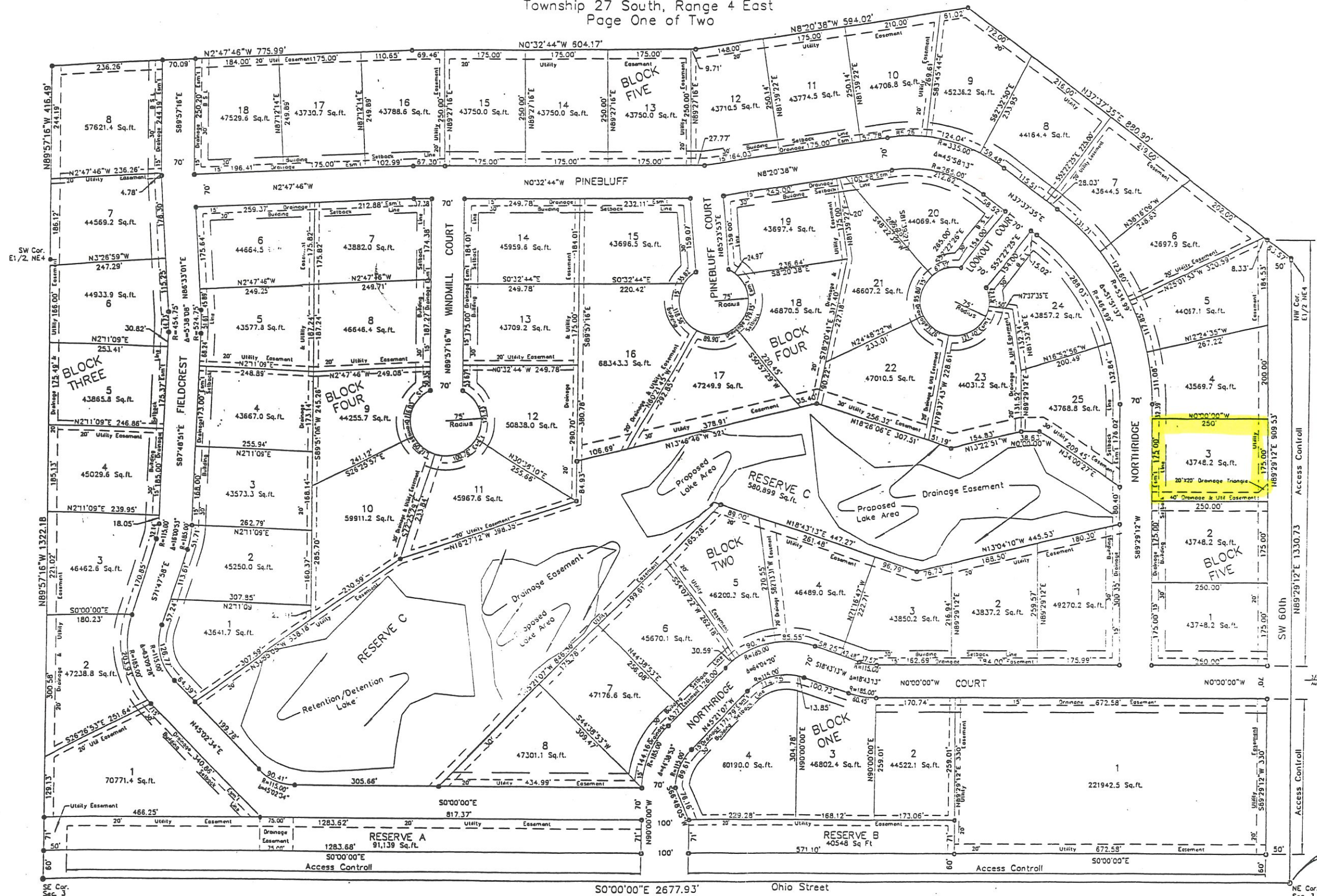
Final Plat Northridge

BUTLER COUNTY, KANSAS
 Northeast Quarter, Section 3
 Township 27 South, Range 4 East
 Page One of Two



Scale 1" = 100'
 100 0 100

- LEGEND
- Set Bar & Cap
 - ⊙ Found 3/4" Bar
 - ⊞ Found 1" Bar
 - ⊠ Found Concrete Block
 - ⊙ Found GE Bar & Cap



Point of Beginning

Prepared by:
 Goedecke Engineering Company
 205 S. Main Street
 El Dorado, Kansas 67042
 316-321-3773
 FAX 321-4199
 File No. 7131_Fnl3-04.1x